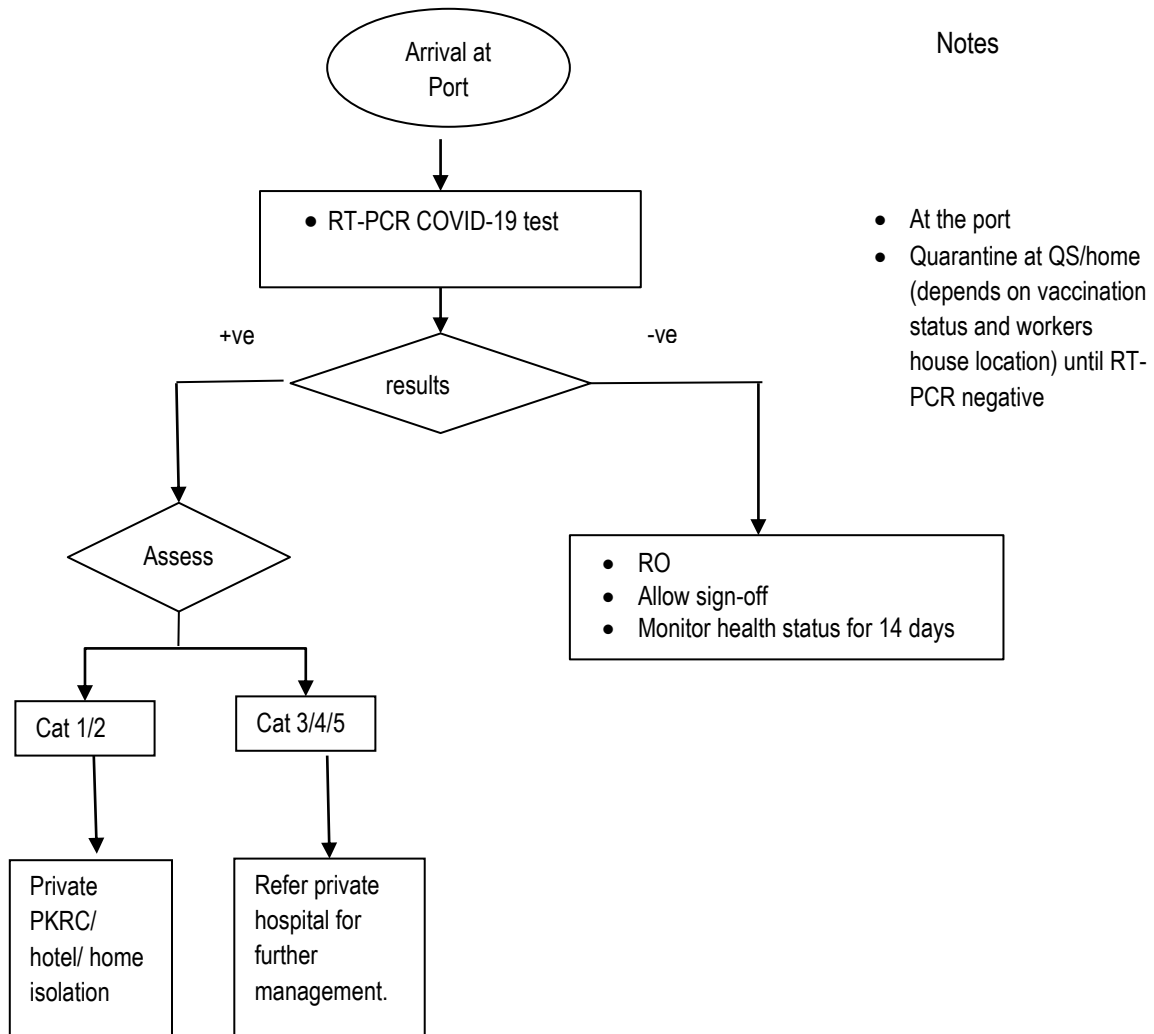
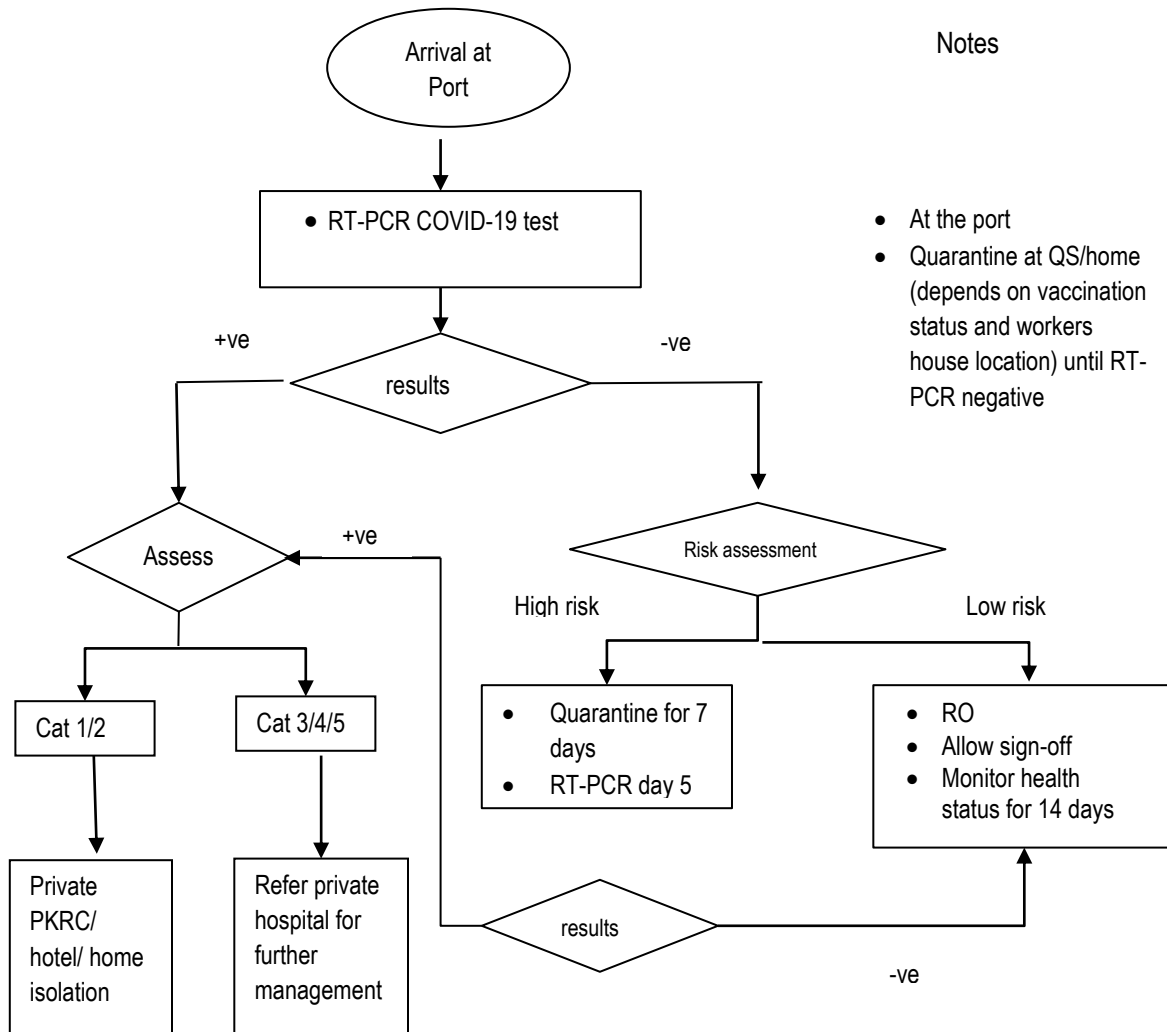


**FLOW CHART : SIGN-OFF PROCEDURE FOR FULLY VACCINATED OFFSHORE WORKERS  
(MALAYSIAN / NON-MALAYSIAN) – DOMESTIC PLATFORM/ VESSEL**



**Note :**  
For those **unvaccinated / incomplete vaccination**, quarantine at QS for **10 days**, **repeat RT-PCR day 8**. RO will be given on day 11 if RT-PCR day 8 is negative.

**FLOW CHART : SIGN-OFF PROCEDURE FOR FULLY VACCINATED OFFSHORE WORKERS –  
INTERNATIONAL PLATFORM/VESSEL**



Notes

- At the port
- Quarantine at QS/home (depends on vaccination status and workers house location) until RT-PCR negative

Note :

1. For those **unvaccinated / incomplete vaccination**, quarantine at QS for **10 days, repeat RT-PCR day 8**. RO will be given on **day 11** if RT-PCR day 8 is negative.
2. Off-signer plan to go abroad; allow sign-off once RT-PCR D1 negative and flight ticket available. The transport arrangement to KLIA/airport are the responsibility of the agent/shipping company