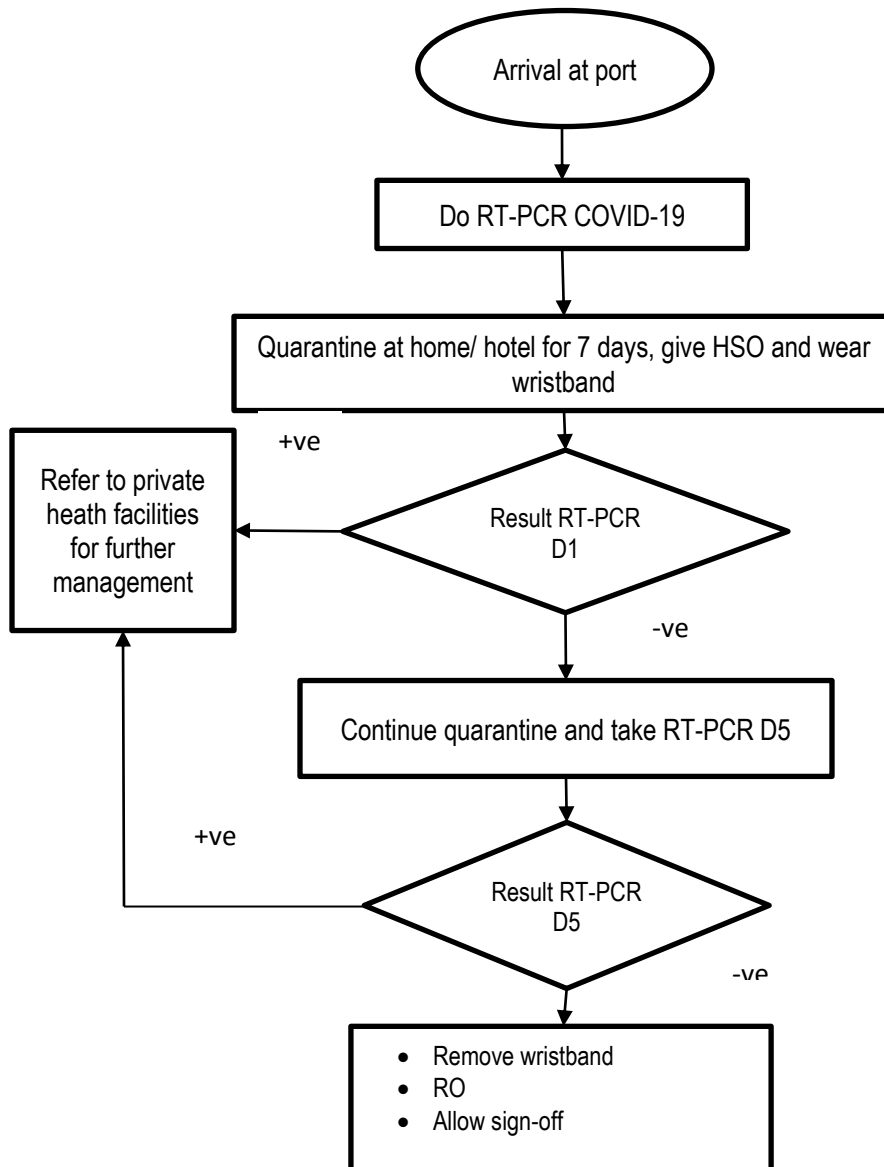


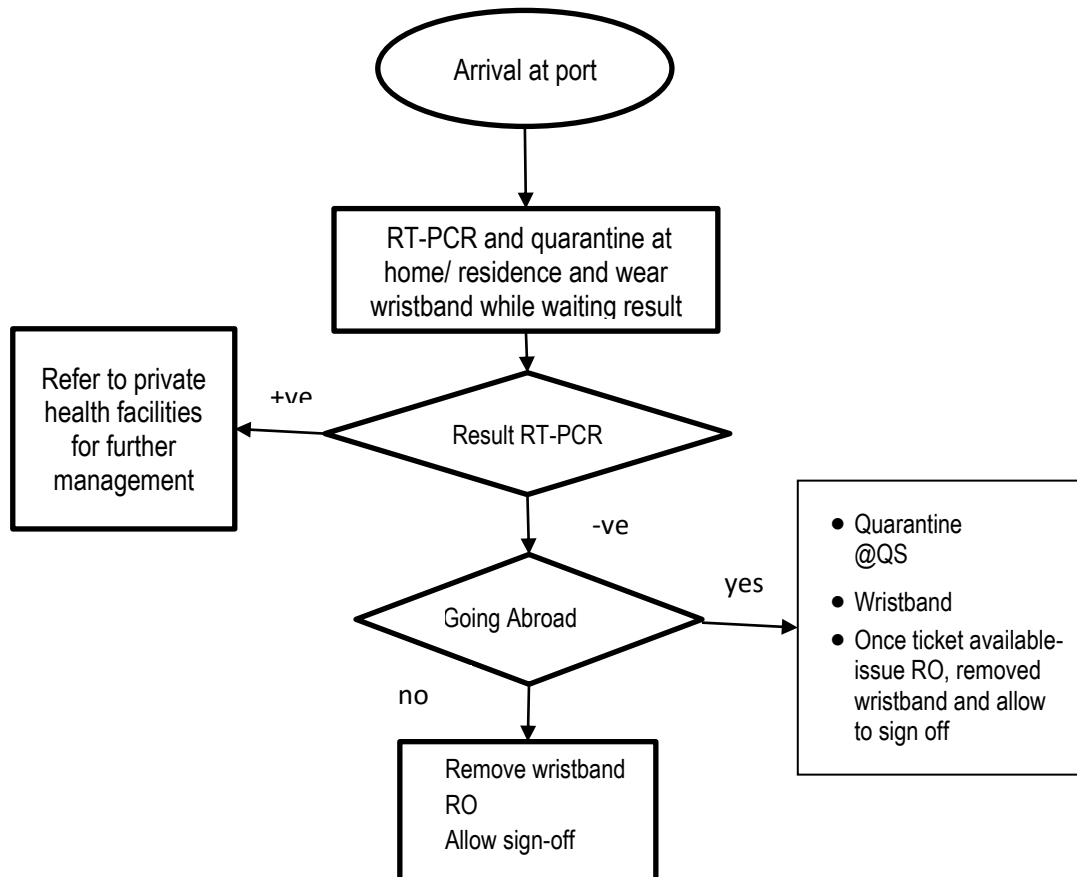
**FLOW CHART : SIGN OFF PROCEDURE FOR FULLY VACCINATED SEAFARER
(INTERNATIONAL WATER)**



Note :

1. If the seafarer is **not fully vaccinated** to do a RT -PCR COVID -19 test 10 days prior sign on day, quarantine at home for 10 days and to repeat RT -PCR on Day 8. To give RO on day 11 if RT-PCR day 8 negative
2. Off-signer plan to go abroad; allow sign-off once RT-PCR D1 negative and flight ticket available. The transport arrangement to KLIA/airport are the responsibility of the agent/shipping company

**FLOW CHART : SIGN OFF PROCEDURE FOR FULLY VACCINATED SEAFARER
(FROM DOMESTIC WATER)**



Note :

1. If the seafarer is **not fully vaccinated** to do a RT -PCR COVID -19 test 10 days prior sign on day, quarantine at home for 10 days and to repeat RT -PCR on Day 8. To give RO on day 11 if RT-PCR day 8 negative.
2. Off-signer plan to go abroad; allow sign-off once RT-PCR negative and flight ticket available. The transport arrangement to KLIA/airport are the responsibility of the agent/shipping company