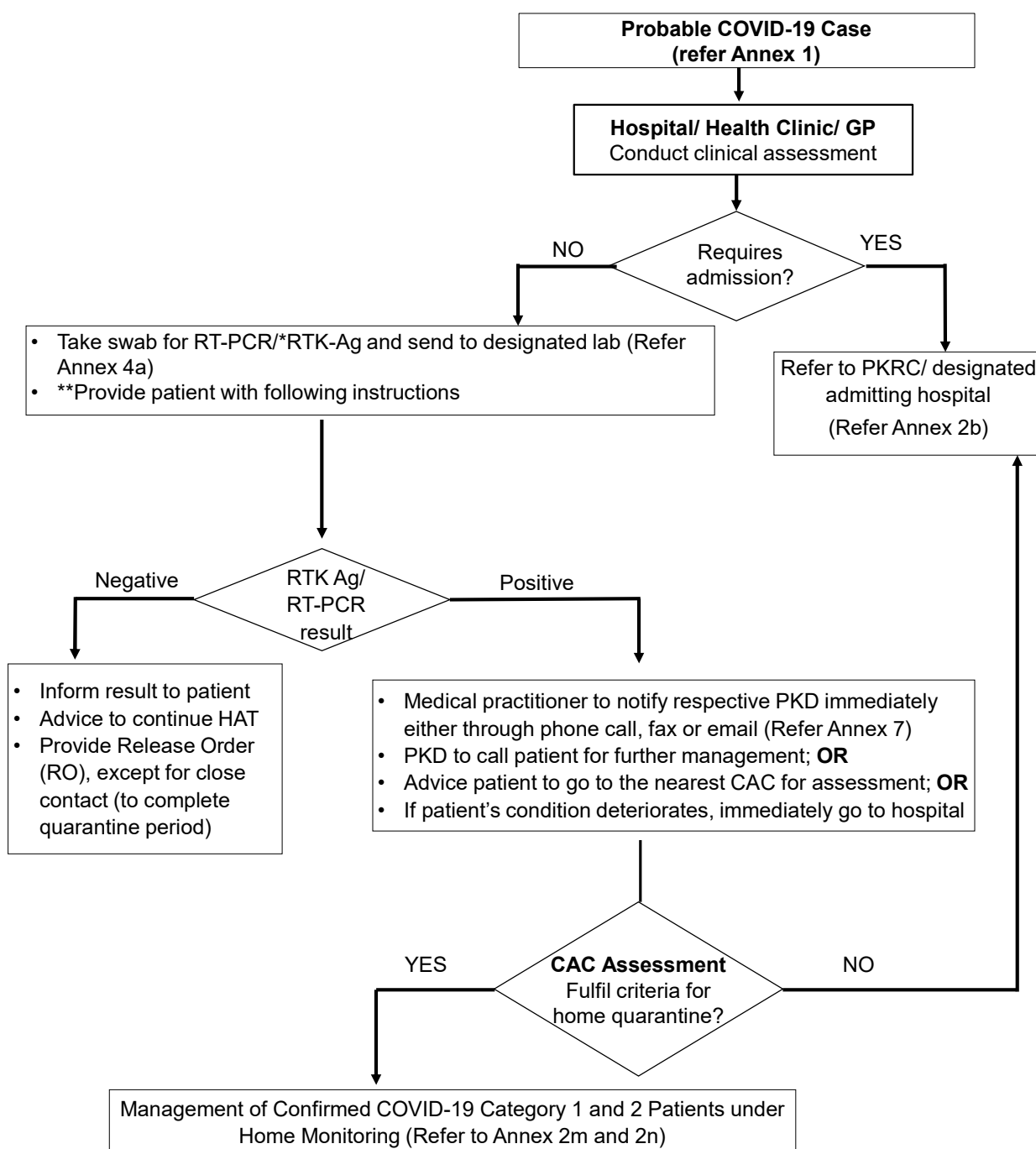


Flowchart for the Management of Probable COVID-19 Case



*RTK-Ag may be used as a diagnostic test when prevalence of COVID-19 is $\geq 10\%$ (on rolling 7 days) Refer Annex 4c: Guideline on COVID-19 Testing Using Antigen Rapid Test Kit (RTK-Ag) For The Health Facilities in Ministry of Health

**

- Ask patient to download and register into **MySejahtera app** (Refer Annex 42)
- Brief on **Home Assessment Tool (HAT)** (Refer Annex 10) and provide pamphlets on COVID-19 infection
- Issue Home Surveillance Order (HSO) and provide wrist band
- Inform patient to immediately go to hospital if condition deteriorates