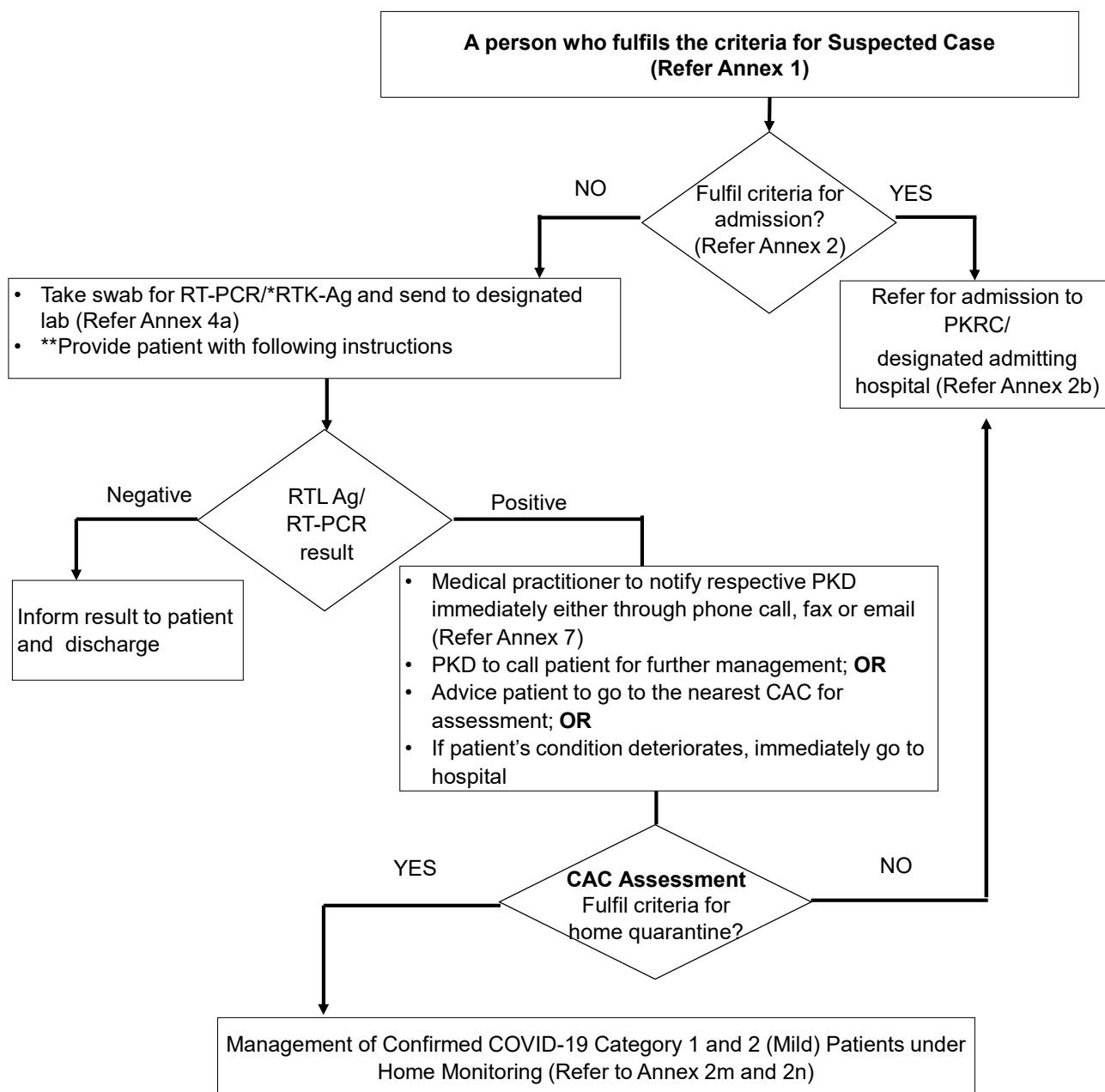


## Flowchart for the Management of Suspected COVID-19 Case as Outpatient



\*RTK-Ag may be used as a diagnostic test when prevalence of COVID-19 is  $\geq 10\%$  (on rolling 7 days) Refer Annex 4c: Guideline on COVID-19 Testing Using Antigen Rapid Test Kit (RTK-Ag) For The Health Facilities in Ministry of Health

\*\*

- Ask patient to download and register into **MySejahtera app** (Refer Annex 42)
- Brief on **Home Assessment Tool (HAT)** (Refer Annex 10) and provide pamphlets on COVID-19 infection
- Advice on self quarantine and risk of COVID-19 transmission to family and community
- Consider providing Medical Certificate(MC) to patients until COVID-19 testing result is obtained
- Inform patient:
  - DHO/PKD will contact within 48 hours if result is positive
  - Immediately go to hospital if condition deteriorates