

MANAGEMENT OF CLOSED CONTACTS OF CONFIRMED CASE

1. Closed contacts of confirmed case were those as below:
 - Face-to-face contact with a confirmed case within 1 metre and for at least 15 minutes;
 - Living in the same household as a COVID-19 patient;
 - Working together in close proximity or sharing the same classroom environment with a COVID-19 patient;
 - Travelling together with COVID-19 patient in any kind of conveyance;
 - Health care associated exposure without appropriate PPE (including providing direct care for COVID-19 patients, working with health care workers infected with COVID-19, visiting patients or staying in the same close environment of a COVID-19 patient).

2. Close contacts can be detected through the following activities:
 - a. Contact tracing by the Rapid Assessment Team (RAT) and the Rapid Response Team (RRT) on the field;
 - b. Personnel who were noted to be in close contact to an identified positive case or who were handling the relevant specimens or an object soiled with respiratory secretion without recommended PPE;
 - c. Any person who came and declared himself at either government and private hospital and clinic;
 - d. Any person who declared or named as a close contact through MySejahtera Apps;
 - e. Any person who is notified through IHR Focal Point from other country.

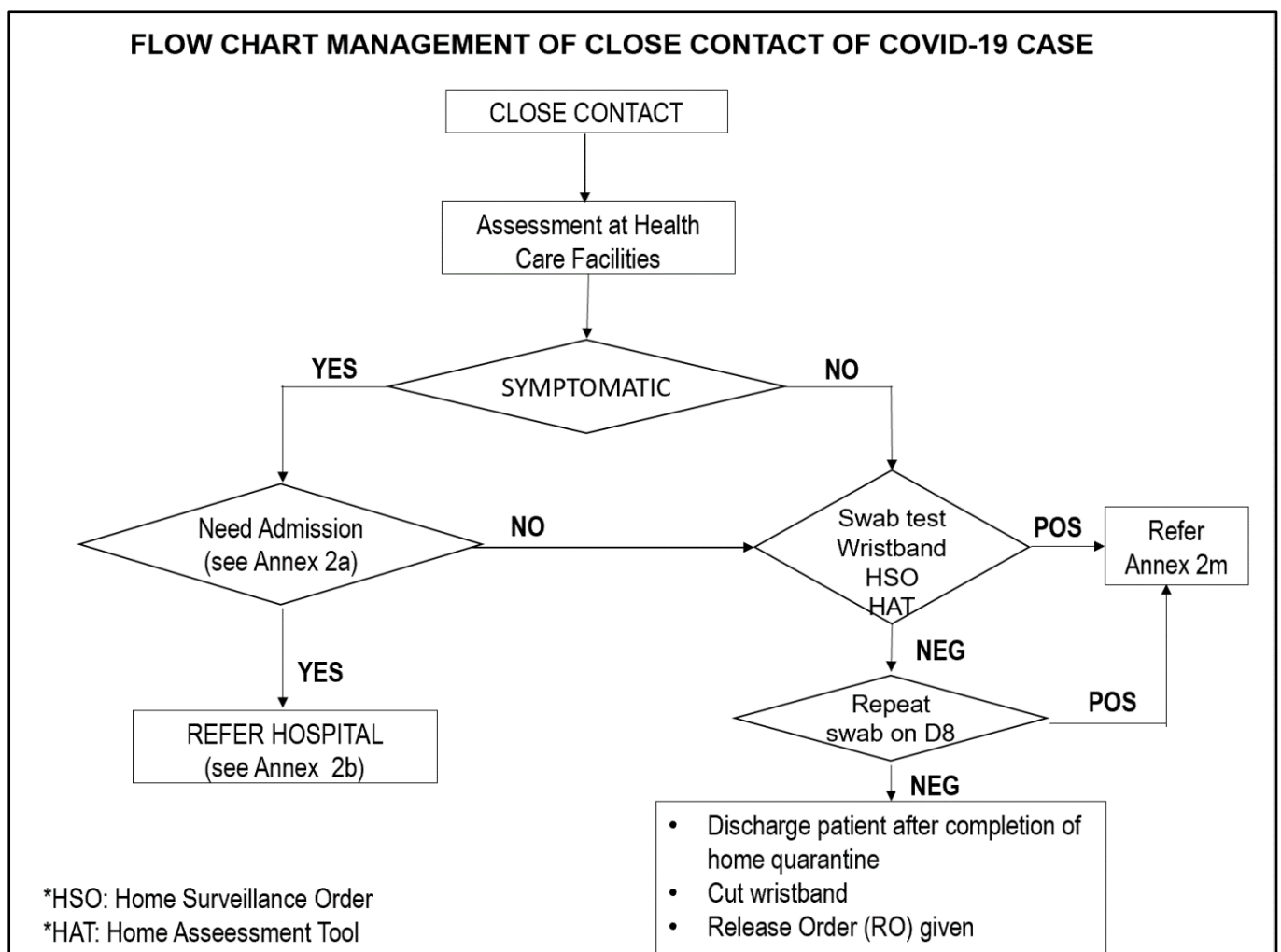
3. All close contacts of confirmed case shall be screened for COVID-19 at screening health care facilities.

4. Overall management of Close Contact
 - All close contact identified should be tested for COVID-19 using RTK Ag* / RT-PCR;
 - All close contact will be given Home Surveillance Order (HSO) and undergone 10 days quarantine based on time of exposure to positive case;
 - If RTK Ag*/ RT-PCR positive, this person will be treated as confirmed COVID-19 case (ANNEX 2, Annex 2m);
 - If RTK Ag/ RT-PCR negative, continue home surveillance. At any point, this person developed symptom, this person should be tested for COVID-19 manage as in ANNEX 2.
 - At Day 8, RTK Ag*/ RT PCR will be conducted to this person:
 - if the result is negative and no symptoms developed, the Release Order (RO) will be issued at Day 10 (Annex 17);
 - if result is positive manage as ANNEX 2 and Annex 2m.

5. The role of District Health Office for close contact
 - Issued Home Surveillance Order and given a wristband (Annex 14a/b);
 - Explain regarding COVID-19 and its risk for patient and their family;
 - Explain on the home assessment tool (Annex 10);
 - Ask close contact to download, register and daily update of health status in MySejahtera Apps;

- To monitor severity of the symptoms of close contacts through MySejahtera dashboard for further management;
- Give appointment for COVID-19 test;
- Issue Release Order (RO) for close contact with negative swab and asymptomatic after completed of quarantine period.

*A person with a positive RTK-Ag in pre-determined areas/locality with prevalence of COVID-19 > 10% (As determined by State and National CPRC)



This guideline is use for all state except Greater Klang Valley Task Force (GKVTF)