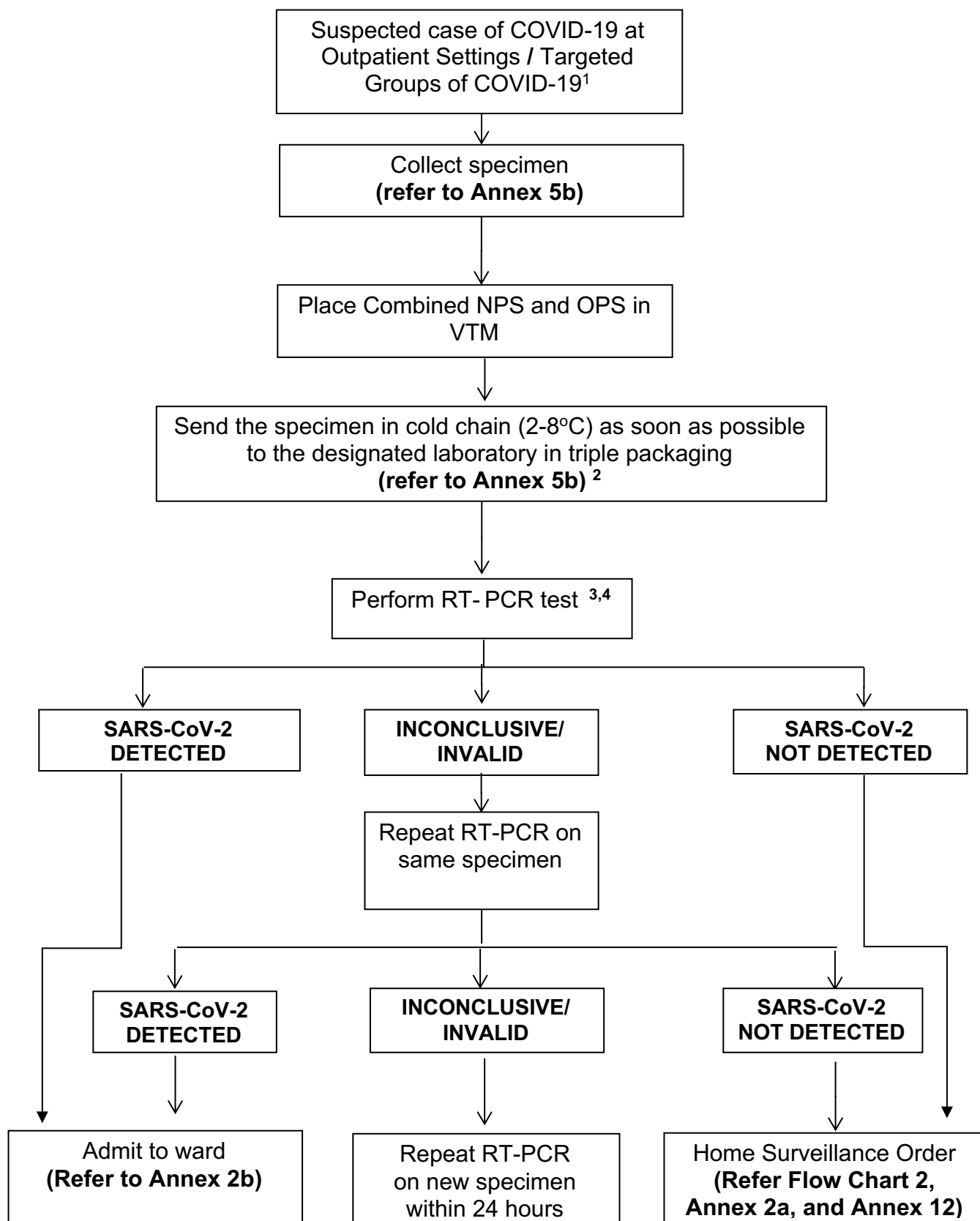


Annex 5f : Laboratory Diagnosis of SARS-CoV-2 in Suspected Case of COVID-19 at Outpatient Settings/ Targeted Groups of COVID-19

Flow Chart 1 : Flow Chart for Laboratory Diagnosis of SARS-CoV-2 in Suspected Case of COVID-19 at Outpatient Settings/ Targeted Groups of COVID-19



¹ Refer to Annex 1: Case definition of COVID-19

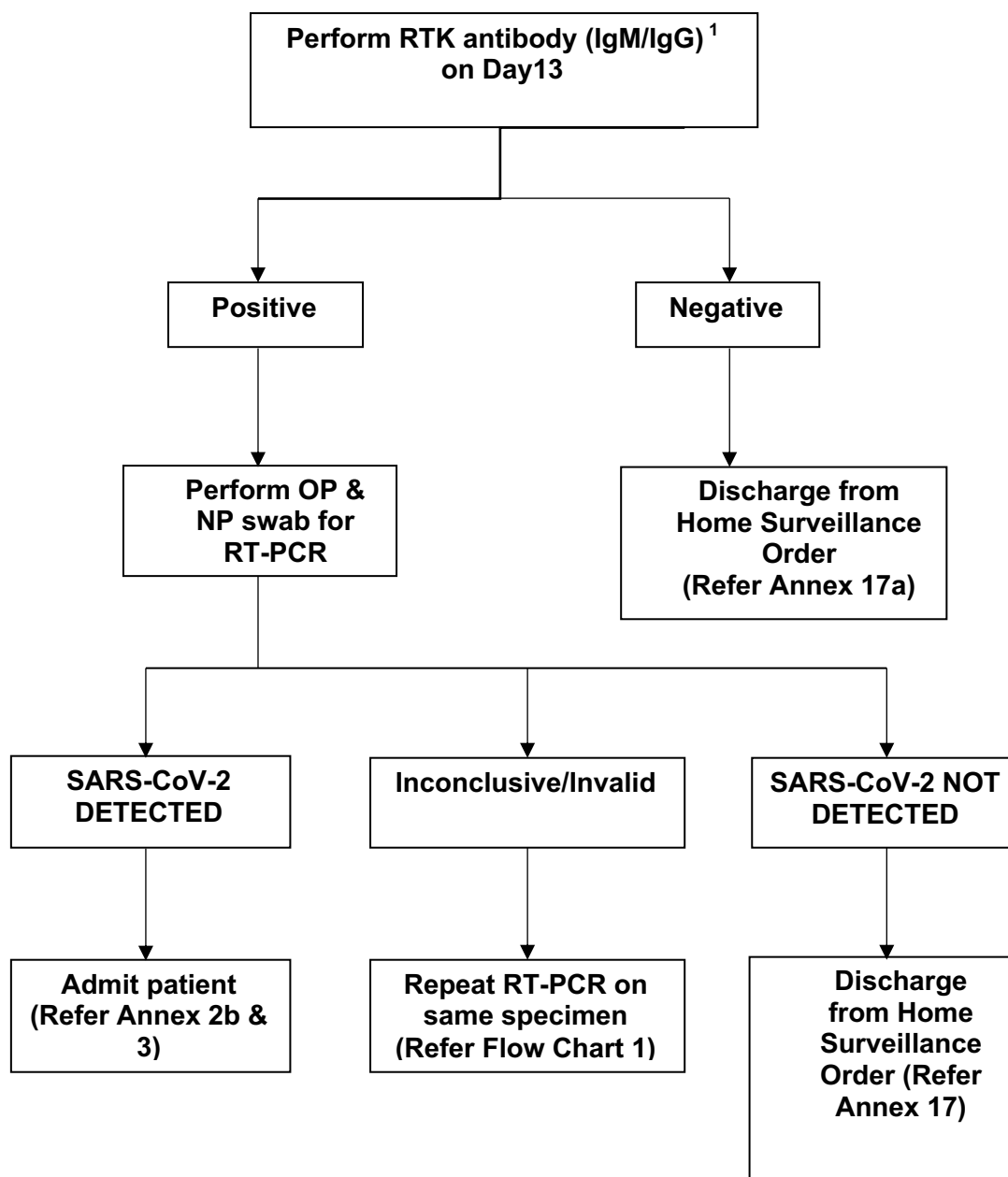
² If transportation of sample is within 72 hours, store at 2-8°C. If transportation of sample is after 72 hours, store at - 80°C

³Use approved RT-PCR kit by MDA. The assay shall have 2 different targets on SARS-CoV-2 genome, of which at least one target confirmatory for SARS-CoV-2 ,following the recommendations and updates by WHO from time to time. A correlation study is needed if the assay has only one target gene. Follow manufacturer 's kit insert for procedure.

⁴ For rapid molecular testing and antigen testing, refer to Annex 5e: Laboratory protocol on COVID-19 for the health facilities, Ministry of Health, Malaysia and Annex 4c: Guideline on RTK Ag Antigen testing

All results must be reported in SIMKA OUTBREAK

Flow Chart 2 : Flow chart for Rapid Test Kit Antibody for Home Surveillance Order on Day 13



¹Use RTK antibody recommended by MDA. Follow manufacturer's kit insert for procedure.

All results must be reported in SIMKA OUTBREAK